

# Two is better than one at conquering cancer



Power up your workflow with the EZ2<sup>®</sup> Connect and QIAcuity<sup>®</sup>

You want to impact the future of global cancer research faster and stronger. But successful biomarker profiling from liquid biopsies (cfDNA) and FFPE samples still seem to be a challenging endeavor. Samples are precious. Target mutations are often present in low quantities or a complex background of other components. Therefore, you need to optimize their detection and quantification for the highest sensitivity and reproducibility.

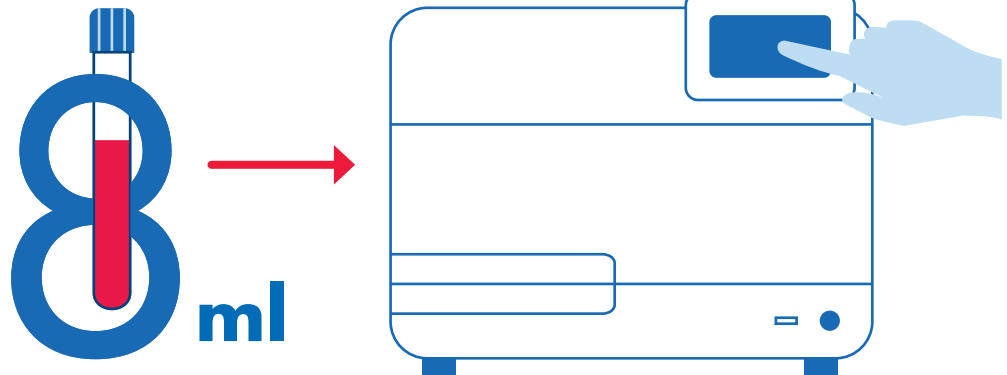
Have you considered the power of two for your cancer research workflow? You can now combine a fully automated and convenient high-volume sample processing of various sample types and analytes on the EZ2 Connect with fast and sensitive ultra-low mutation detection using digital PCR on the QIAcuity, making it “easier” to conquer cancer.

# Achieve a high level of standardization for liquid biopsy samples

## Fully automated high volume sample processing

- Unparalleled flexibility
  - High input volume loading on the EZ2 Connect
  - High eluate volume loading in the QIAcuity Nanoplate
  - Process up to 24 samples simultaneously on the EZ2 Connect
  - QIAcuity system comes in different plate and instrument configurations
- Highly automated workflow for highest reproducibility, process safety and standardization

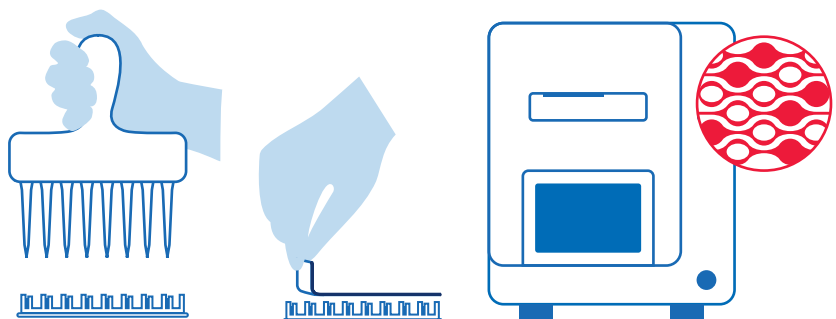
- 1 Fully automated cfDNA isolation from up to 8 ml plasma or serum input



- 2 cfDNA 70  $\mu$ l eluate



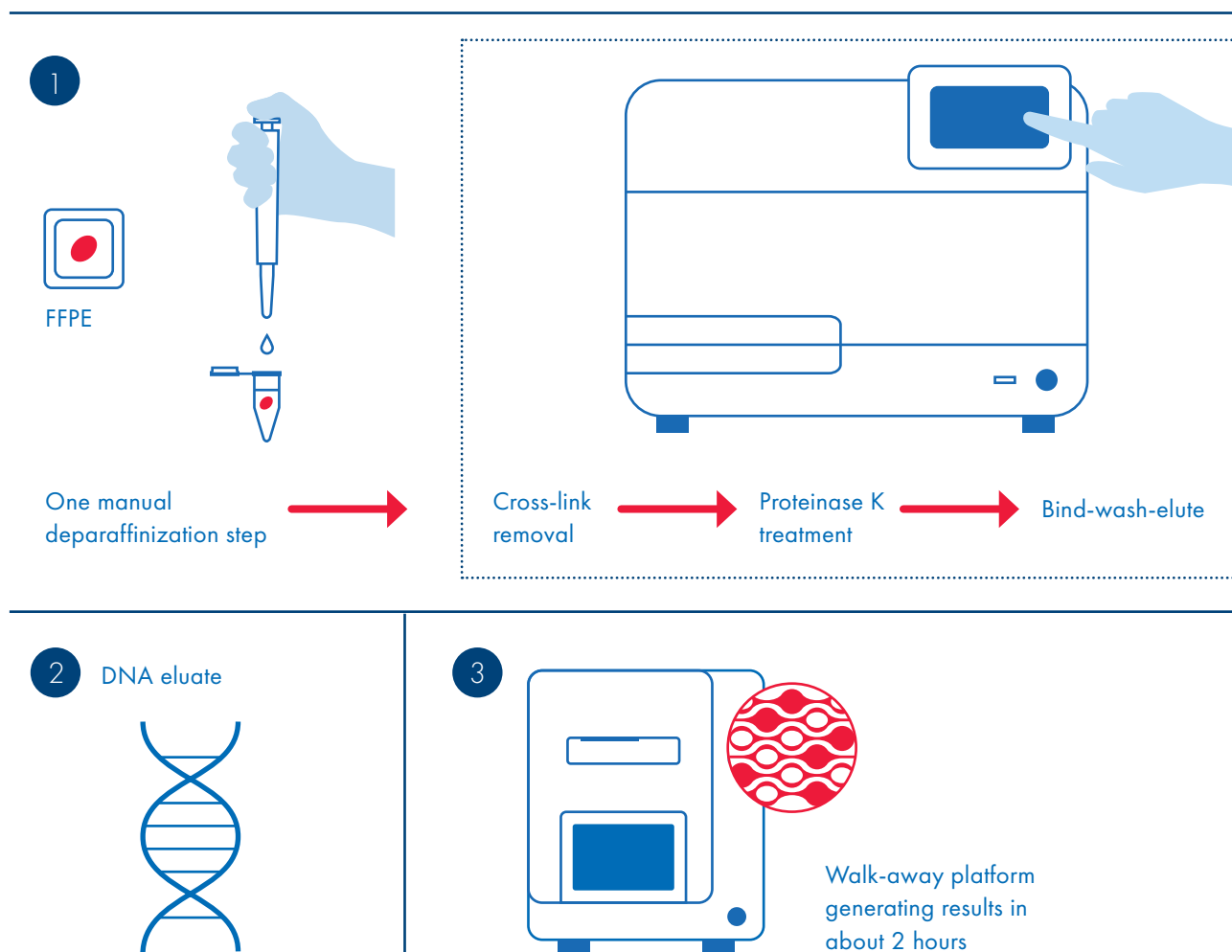
- 3 Load up to 28  $\mu$ l eluate in a QIAcuity Nanoplate 26K for dPCR reaction



# Gain maximum convenience for FFPE samples

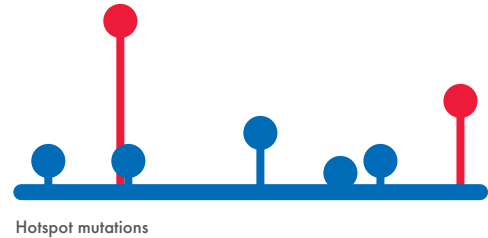
## Unmatched degree of automation

- Significantly reduced manual handling of the FFPE sample
  - Only one manual step to obtain the DNA eluate
- QIAcuity integrates all steps of a downstream dPCR reaction into a walk-away platform generating results in about 2 hours



# Key applications to benefit from the power of two

Identification and validation of molecular biomarkers for potential future use in clinical applications like patient stratification, therapy monitoring or MRD (measurable residual disease) analysis.



If you'd like to bring the power of two to your laboratory, our team is more than happy to give you a demo of the instruments. Request a demo here [www.qiagen.com/instrument-demo](https://www.qiagen.com/instrument-demo)

If you're interested in a quick chat before signing up for the demo, please contact:

For up-to-date licensing information and product-specific disclaimers, see the respective QIAGEN kit handbook or user manual. QIAGEN kit handbooks and user manuals are available at [www.qiagen.com](https://www.qiagen.com) or can be requested from QIAGEN Technical Services or your local distributor.

Trademarks: QIAGEN®, Sample to Insight®, QIAcuity®, EZ2® (QIAGEN Group).  
01/2022 QPRO-232 ©2022 QIAGEN, all rights reserved.